



**SAILING INSTRUCTIONS
INTERNATIONAL MELGES 32 CLASS
Melges 32 Miami Championship
01-04 March 2012
Hosted by Coconut Grove Sailing Club
Event Headquarters at Miami Beach Marina**

1 RULES

- 1.1 This regatta will be governed by the rules as defined in *The Racing Rules of Sailing (RRS)*.
- 1.2 The “class rules for the purposes of the definition of “rules are the International Melges 32 Class Rules (IM32CR).
- 1.3 International Melges 32 Class Rules (IM32CR) Section H (EVENT RULES) including all subsections (H.1-H.8) shall apply.
- 1.4 The Organizing Authority (OA) is Coconut Grove Sailing Club and IM32CA.
- 1.5 Video and/or photographs shall not be used as evidence at protest or request for redress hearings. This changes RRS 63.6.
- 1.6 All boats must carry minimum equipment as required by the US Coast Guard and the IM32CR C.5 PORTABLE EQUIPMENT. .
- 1.7 IM32CR C.1.1 RULES shall apply:
 - (a) RRS 43.1(b) shall not apply.
 - (b) RRS 49.2 is changed in that the lines are hiking lines and tension may be modified.

(c) RRS 42.3(c) is modified to allow the spinnaker sheet to be trimmed without restriction.

(d) The ERS Part I – Use of Equipment shall apply.

2 NOTICES TO COMPETITORS

2.1 Notices to competitors will be posted on the official notice board located at the Miami Beach Marina (MBM), Regatta Tent south of Pier E.

2.2 Any questions concerning these sailing instructions, scoring, or any other racing issues shall be submitted in writing to the Race Office, Tent south of Pier E.

Forms to submit inquiries are available there. All written inquiries and responses will be posted on the official notice board.

3 CHANGES TO SAILING INSTRUCTIONS

Any change to the sailing instructions will be posted before 0830 on the day it will take effect, except that any change to the schedule of races will be posted by 2000 on the day before it will take effect.

4 SIGNALS MADE ASHORE

4.1 Signals made ashore will be displayed on the main flagpole at MBM.

4.2 When flag AP is displayed ashore, '1 minute' is replaced with 'not less than 60 minutes' in the race signal AP. This changes rule Race Signals.

4.3 Protest time limit notification, see SI 16.3.

5 SCHEDULE OF RACES

5.1 Schedule:

Day	Date	Event	Time
Wednesday	29 February	Registration, Crew Weigh-in Miami Beach Marina Regatta Tent south of Pier E	1400-1800
Thursday	01 March	Registration, Crew Weigh-in Registration, Crew Weigh-in Opening Ceremonies/ Competitors Meeting	0800-1100 1400-1800 1800

		Monty's Raw Bar/Miami Beach Marina All Boats Afloat	2200
Friday	02 March	Competitors Briefing (Tent south of Pier E) Racing 1 st Warning Signal More racing to follow	0815 1100
Saturday	03 March	Competitors Briefing (Tent south of Pier E) Racing 1 st Warning Signal More racing to follow	0815 1100
Sunday	04 March	Competitors Briefing (Tent south of Pier E) Racing Warning Signal More racing to follow No warning signal after Closing Ceremonies Awards (Monty's Raw Bar)	0815 1100 1430 After racing

5.2 Eight (8) Races are scheduled.

5.3 The RC may conduct as many as 3 races each day.

5.4 The O.A. and/or the R.C. reserve the right to modify the program due to weather conditions or other causes.

6 CLASS FLAGS

The Class flag will be the M32 class insignia in blue on a white background or Numeral pennant # 1.

7 RACING AREAS

The racing area will be east of Key Biscayne. (See Attachment A)

8 THE COURSES

8.1 No later than the warning signal, the race committee signal boat will display on the RC Signal Boat the course, approximate compass bearing and distance of the first leg. Failure to broadcast or to receive this notification shall not constitute grounds for granting redress. This changes 62.1(a).

The information will be arranged vertically.

Example:

5		<i>Course</i>
300		<i>Approximate magnetic bearing to Mark 1</i>
1.5		<i>Approximate distance to Mark 1. (nautical miles)</i>

Course 4: (4 Legs) Start - 1 - 1a - Gate - 1 - 1a - Finish (Downwind)
 Course 5: (5 Legs) Start - 1 - 1a - Gate - 1 - 1a - Gate- Finish (Upwind)
 Course 6: (6 Legs) Start - 1 - 1a - Gate - 1 - 1a - Gate- 1 - 1a - Finish (Downwind)
 Course 7: (7 Legs) Start - 1 - 1a - Gate - 1 - 1a - Gate- 1 - 1a - Gate - Finish (Upwind)

8.2 Marks 1 and 1a shall be rounded to port. Mark 1a is an offset mark and will be positioned to port of Mark 1.

- 8.3 (a) If only one Gate mark is set, boats shall round the single mark to port.
 (b) Except when there is a change of course, the Gate will be positioned to windward of the RC Signal Boat.
 (c) The Gate may be laid after the starting signal.

8.4 Except for when there is a change of course:

- (a) the finish for course 4 and 6 will be to leeward of the Gate; and
 (b) the finish for course 3, 5 and 7 will be to windward of Mark 1.

9 MARKS

9.1

	Original Marks	New Marks per SI 12.1
Mark 1	Large Orange Cylinder	Large Yellow Cylinder
Mark 1A	Orange tetrahedron	Yellow tetrahedron
GATE	Small Orange Cylinders	Small Orange Cylinders

9.2 The starting and finishing marks will be race committee boats or a nearby inflatable mark, a yellow tetrahedron.

10 AREAS THAT ARE OBSTRUCTIONS

The following areas are designated as obstructions: None.

11 THE START

11.1 RC signal boat will display code flag L (LIMA) with one sound as it departs the harbor.

11.2 The starting line will be between the staffs displaying an orange flag on the starboard end signal boat and the port-end starting mark boat. In the event that the port-end mark boat is not on station, it will be replaced by an inflatable mark.

11.3 Individual recalls and boats disqualified under rule 30.3 will be broadcast on the VHF channel identified in SI 27.3 using bow/sail numbers (see SI 21). This is in addition to and changes rules 29.1 and 30.3.

11.4 The RC will broadcast twice the bow/sail numbers of all boats observed to be OCS at the start; it will not alter the list based on a boat's actions subsequent to the start.

11.5 Individual and General Recall flags will be displayed by both RC starting line boats.

12 CHANGE OF THE NEXT LEG OF THE COURSE

To change the next leg of the course, the race committee will lay a new mark (or move the finishing line) and remove the original mark as soon as practicable. When in a subsequent change a new mark is replaced, it will be replaced by an original mark.

13 THE FINISH

13.1 For downwind finishes, the finishing line will be between a staff displaying an orange flag on the finishing line boat and a staff displaying an orange flag on a nearby RC boat or an inflatable mark. The finishing line will be located beyond the leeward gate.

13.2 For windward finishes, the finishing line will be between a staff displaying an orange flag on the finishing line boat and a staff displaying an orange flag on a nearby RC boat or an inflatable mark.

13.3 If the race committee intends to start another race on the same day, it will display the Second Substitute (with no sound) while boats are finishing.

14 PENALTY SYSTEM

14.1 RRS 44.1(a) and 44.2 are changed as so the penalty shall be a one turn penalty including one tack and one gybe, except within 3 boats lengths of a mark the penalty shall be a two turn penalty each turn including one tack and one gybe. This changes RRS 44.1(a) and 44.2.

14.2 Unless the course is shortened to finish at the windward mark, penalties within 3 boat lengths of the windward mark or on the offset leg may be delayed and taken as soon as possible on the downwind leg.

15 TIME LIMITS AND TARGET TIMES

15.1 Time limits and target times are as follows:

<u>Time Limit</u>	<u>Mark 1 Time Limit</u>	<u>Target Time</u>
120 mins	45 mins	90 mins

If no boat has passed Mark 1 within the Mark 1 time limit the race will be abandoned.

15.2 Failure to meet the target time will not be grounds for granting redress. This changes rule 62.1(a).

16 PROTESTS AND REQUESTS FOR REDRESS

16.1 Protest forms are available at the Regatta tent south of the Pier E at MBM. Protests and requests for redress or reopening shall be delivered there within the appropriate time limit.

16.2 The protest time limit is 60 minutes after the RC signal boat docks at MBM. The docking time will be posted on the official notice board. The same time limit applies to protests by the RC about incidents they observe in the racing area and to requests for redress. This changes rules 61.3 and 62.2.

16.3 The race committee will display code flag B (BRAVO) with one sound on the official flagpole ashore one hour before the end of the protest time limit. The race committee will drop flag B (BRAVO) with one sound at the end of the protest time limit.

16.4 Notices will be posted no later than 30 minutes after the protest time limit to inform competitors of hearings in which they are parties or named as witnesses. Hearings will be held in the protest room, located at MBM, beginning at the time posted.

16.5 Notices of protests by the race committee will be posted to inform boats under rule 61.1(b).

16.6 Breaches of instructions 18, 21, 24, 27, 31, 32 and 33 will not be grounds for a protest by a boat. This changes rule 60.1(a). Penalties for these breaches may be less than disqualification if the protest committee so decides. The scoring abbreviation for a discretionary penalty imposed under this instruction will be DPI.

16.7 On the last scheduled day of racing a request for reopening a hearing shall be delivered:

(a) Within the protest time limit if the requesting party was informed of the decision on the previous day;

(b) No later than 30 minutes after the requesting party was informed of the decision on that day. This changes rule 66.

16.8 On the last scheduled day of racing a request for redress based on a protest committee decision shall be delivered no later than 30 minutes after the decision was posted. This changes rule 62.2.

16.9 If the race committee posts a list of boats scored OCS, ZFP or BFD on the official notice board before the protest time limit, a request for redress based on such a posted score shall be made no later than one hour after the protest time limit. This changes the first sentence of rule 62.2.

16.10 In the case of a protest, the representative from each yacht that attends the protest in the protest room shall be the owner or the Group 1 driver. Group 3 sailors from the boat protesting or the boat being protested are not allowed in the protest room or to be in contact with the representative in the protest room. Group 3 sailors from other boats may be allowed in the protest room as a witness.

17 SCORING

The Low Point Scoring System of RRS Appendix A will apply, with the following modification:

(a) Three races are required to be completed to constitute a series.

(b) When fewer than six races have been completed, a boat's series score will be the total of her race scores.

(c) When six or more races have been completed, a boat's series score will be the total of her race scores excluding her worst score.

This changes rule Appendix A2.

18 SAFETY REGULATIONS

A boat that retires from a race or leaves the racing area between races shall notify the race committee as soon as possible.

19 REPLACEMENT OF CREW OR EQUIPMENT

19.1 Substitution of competitors will not be allowed without the prior written approval of the race committee and IM32CA Administrator Joy Dunigan for the race to which it applies.

19.2 Substitution of damaged or lost equipment will not be allowed unless authorized by the race committee. Requests for substitution shall be made to the committee at the first reasonable opportunity.

20 EQUIPMENT AND MEASUREMENT CHECKS


A boat or equipment may be inspected at any time for compliance with the class rules and sailing instructions. On the water, a boat can be instructed by a race committee equipment inspector or measurer to proceed immediately to a designated area for inspection.

21 ADVERTISING, BOW NUMBERS, IDENTIFICATION/EVENT STICKERS

Boats shall display bow numbers and event bow stickers during the event as provided by the OA shall be attached to both sides of the boat's hull at all times while racing. The instructions as to position will be supplied by the organizing authority at registration. It is the responsibility of the crew to ensure the numbers and stickers remain on the boat and obtain replacements as necessary.

22 OFFICIAL BOATS

Official boats will be marked as follows:

RC Signal Boat/ Port-end line boat/ Windward mark/Gate boat	Blue Race Committee flag 
Protest Committee boats	White Flag with Black 'J'
Press Boats	Yellow Flag with Black 'P'
RC Measurement/Equipment Check Boat	White Flag with a Black 'M'

23 SUPPORT BOATS

23.1 Restrictions on Support Boats shall apply as described in International Melges 32 Class Rule H.5 OUTSIDE ASSISTANCE.

A boat shall receive no outside assistance from: support boats, cell phone or radio communication, visual or vocal signaling, transfer of equipment or victuals or otherwise once she has left the dock for the day until she has finished the last race of the day, except in the case of emergency, or motor problems that cause the boat to not make her way to the starting area. If in the case of a motor problem, the boat shall make every attempt to fix the problem prior to the next day's racing and shall make the boat available for inspection by the jury, race committee or class representative. Individual coach or support boats shall not approach closer than 300 feet to any boat that is racing, except at mark roundings or the finish line where they shall not approach closer than 100 feet upwind of the windward mark or downwind of the leeward mark, and extensions of the finish line. At the warning signal for the start, individual coach or support boats shall leave the area being used by the

racing boats and may station themselves outside of either the pin or committee signal boat, but no closer to either end than 100 feet. Sailing Instructions for IM32CA regattas shall contain the following instruction: Video and photos taken from any support and/or coach boat, or spectator boat shall not be used as evidence at protest hearings. This alters RRS 63.6. The penalty for infringing this rule shall be assessed at the discretion of the event Jury or Protest Committee. This rule is not intended as a deterrent to social interaction before and between races.

23.2 Only support boats that have registered with the RC and carry identification provided by the RC will be allowed in the racing area.

24 TRASH DISPOSAL

Boats shall not put trash in the water.

25 HAUL-OUT RESTRICTIONS

Boats shall not be hauled out during the regatta except with and according to the terms of prior written permission of the race committee.

26 DIVING EQUIPMENT AND PLASTIC POOLS

Intentionally left blank

27 RADIO COMMUNICATIONS

27.1 Except in an emergency, a boat shall neither make radio transmissions while racing nor receive radio communications not available to all boats. This restriction also applies to mobile telephones.

27.2 The RC will use VHF radio to communicate to the fleet, including the location of the starting area, countdown to the start, OCS bow/sail numbers, General Recalls, Abandonment and Postponements. Failure to make these broadcasts or failure to hear them shall not constitute grounds for granting redress. This changes rule 62.1.

27.3 VHF channel 73 will be used to communicate with competitors.

27.4 Each competing boat shall carry a VHF marine radio capable of transmitting and receiving VHF channel 09, 16, 22A, 69, 71, 72 and 73.

28 PRIZES

28.1 Prizes for winning helmsman and each crew member for the top five boats overall.

28.3 Daily Prizes for the winner of each race will be presented.

28.4 Additional Prizes may be awarded at the discretion of the RC and OA.

28.5 A prize will be awarded to the best boat that has an all Corinthian crew.

29 DISCLAIMER OF LIABILITY

29.1 Competitors participate in the regatta entirely at their own risk. See rule 4, Decision to Race. The organizing authority will not accept any liability for material damage or personal injury or death sustained in conjunction with or prior to, during, or after the regatta.

29.2 Skippers and crew will be required to sign a waiver of liability during registration

30 INSURANCE

Each participating boat shall be insured with valid third-party liability insurance with a minimum cover of \$300,000 USD per event or the equivalent.

31 CAMERAS & ELECTRONIC EQUIPMENT

Boats may be required to carry cameras, sound equipment or positioning equipment as provided and specified by the organizing authority.

32 MEDIA RIGHTS

Competitors grant the Organizing Authority and IM32CA, the unrestricted right and permission to use the name and the image for any text, photograph or video footage of either themselves or the boat they are sailing during the event to be published or broadcast in any media whatsoever (including but not limited to Press and TV advertisements or Internet), for either editorial or advertising purposes or to be used in press information; in this respect, competitors' names and any biographical material of themselves may also be used or reproduced in any way known. As part of the registration process, each individual participating crewmember will be required to sign a declaration accepting this waiver of rights.

33 BERTHING

Boat Launching and Boat Storage. For information and arrangements regarding boat launching and storage contact the IM32CA at +1 (912) 398-5776.

Dockage - Miami Beach Marina +1 (305) 673-6000

34 COMPETITOR CONDUCT

All owners are responsible for their crew's conduct and shall at all times exemplify the MELGES 32 CLASS MISSION STATEMENT and CODE OF CONDUCT. Failure to do so is grounds for disqualification.

35 WIND SPEEDS

Races will not be started when the race committee deems that winds are consistently at or above 25 knots or gusting to 28 knots and above. If a race has been started and the wind

increases to 25 knots and above, it remains at the discretion of the race committee whether or not to abandon the race. Races will not be started unless winds are consistently above 5 knots at the time of the start.

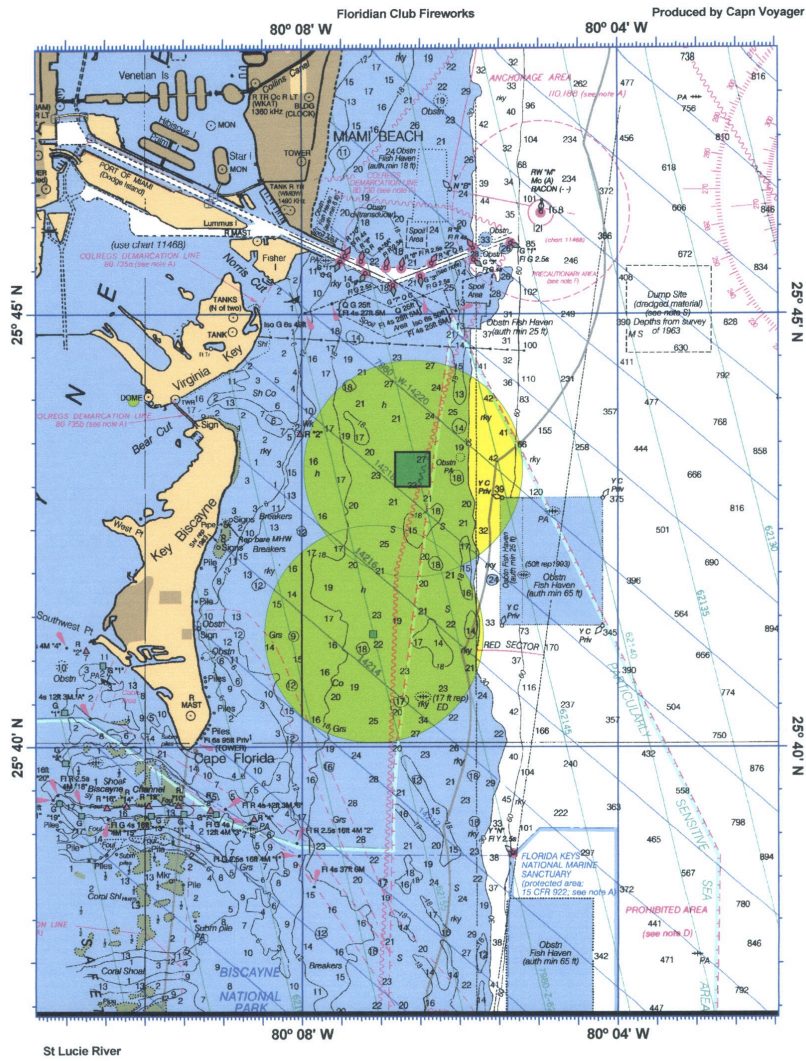
36 RACE OFFICIALS

Principal Race Officer: Hank Stuart ISAF International Race Officer hstuart8m@gmail.com P (Mobile): 585-414-6105	IM32CA Administrator: Joy Dunigan North American Fleet Secretary joy.dunigan@melges32.com P (Office): 912-756-6706 P (Mobile): 912-398-5776
Deputy Race Officer: Ron Rostorfer – Coconut Grove Sailing Club	

ATTACHMENT A

VENUE- Racing Areas

North Circle and South Circle



Not to be used for navigation